

Rowfit

Angle Tuner

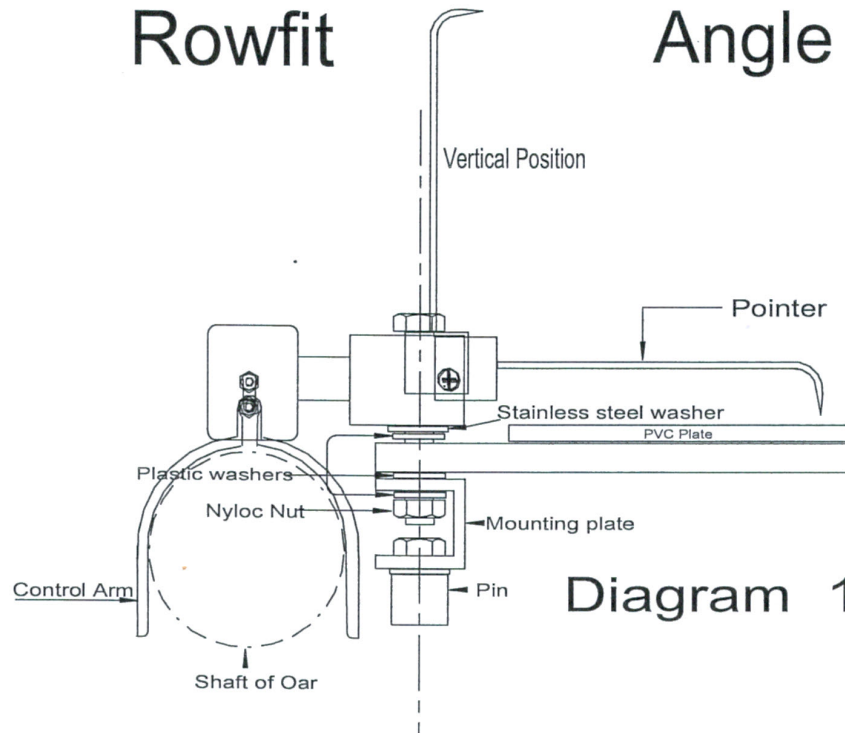


Diagram 1

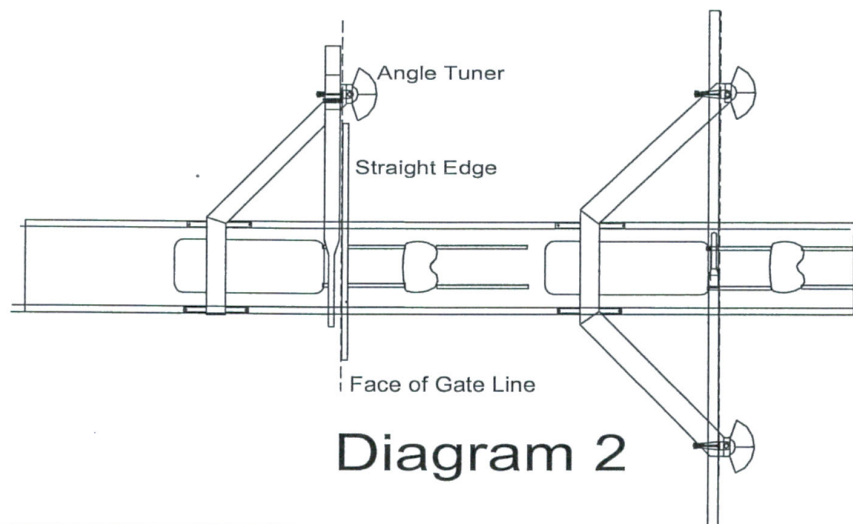


Diagram 2

ROWFIT ANGLE TUNER

OPERATING INSTRUCTIONS

Description

The angle tuner is a device for accurately measuring the catch and finish angle of your crews oars. It will also measure the arc in which the oar travels.

The angle is measured while the crew is rowing so as to give an accurate position of the catch and finish angle.

These positions are indicated by the end points of a pencil line, which is scribed on the PVC angle plate. (The pencil lines can be rubbed off between each use)

Angle tuners come in pairs one for the stroke side and one for the bow side.

They are fitted to the top of the pin and will fit on any type of rigger. The Angle Tuner comes with two mounting brackets one to suit M6 bolts (10mm spanner) and M8 nuts (Sykes / Empacer pins).

Step 1

Fit correct mounting bracket to angle tuner if not already fitted this is done by unscrewing and removing the Nyloc Nut. Fit correct mounting plate. Tighten Nyloc Nut so it is firm. It is important to replace the plastic washers as shown in (see diagram 1).

Step 2

Loosen top nut on pin and slide mounting bracket between the nut and the top of the pin or back arm. Position angle tuner PVC plate to the bow of the pin and tighten in position

Step 3

Lift pointer arm to its vertical position and fit pencil. (see diagram 1)

Step 4

Place oars in gate and attach control arm.

Step 5

To zero PVC plate.

Sculling: Bring both handles to the square off position with the blade square and overlap the left and right handles with the left handle on top. (See diagram 2) Looking directly down on the handles move them so they are parallel. Lower the pointer arm allowing the pencil to touch the PVC plate. If the pencil is not on the Zero line grip the PVC plate with thumb and forefinger and adjust plate until the point of the pencil is on the Zero line. Do this to both sides.

Lift pointer arms once again to the vertical position. (It is important to keep the pointer in the vertical position until the rowers have settled into the boat. Breakage of the pencil tip may occur if the pointer is left down)

Rowing: To set up a rowing oar you will need to mark both gunwale with a line which is directly square off to the face of the gate. Then line up oar parallel to marks. (See diagram 2). Zero the PVC plate as described above. . Lower the pointer arm allowing the pencil to touch the PVC plate. If the pencil is not on the Zero line grip the PVC plate with thumb and forefinger and adjust plate until the point of the pencil is on the Zero line. Do this to both sides.

Lift pointer arms once again to the vertical position. (It is important to keep the pointer in the vertical position until the rowers have settled into the boat. Breakage of the pencil tip may occur if the pointer is left down)